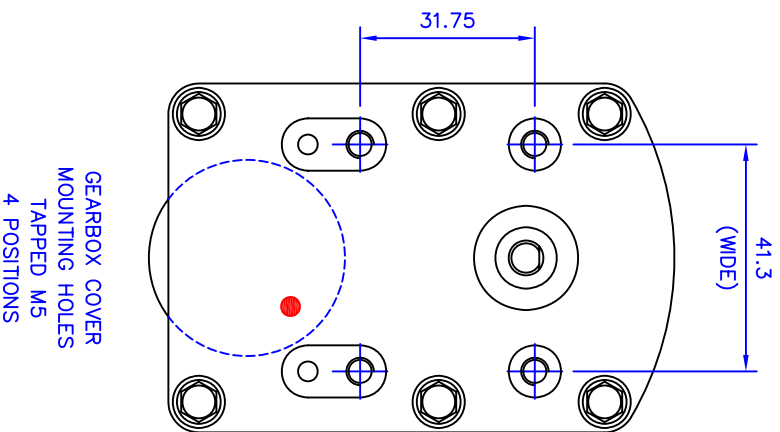
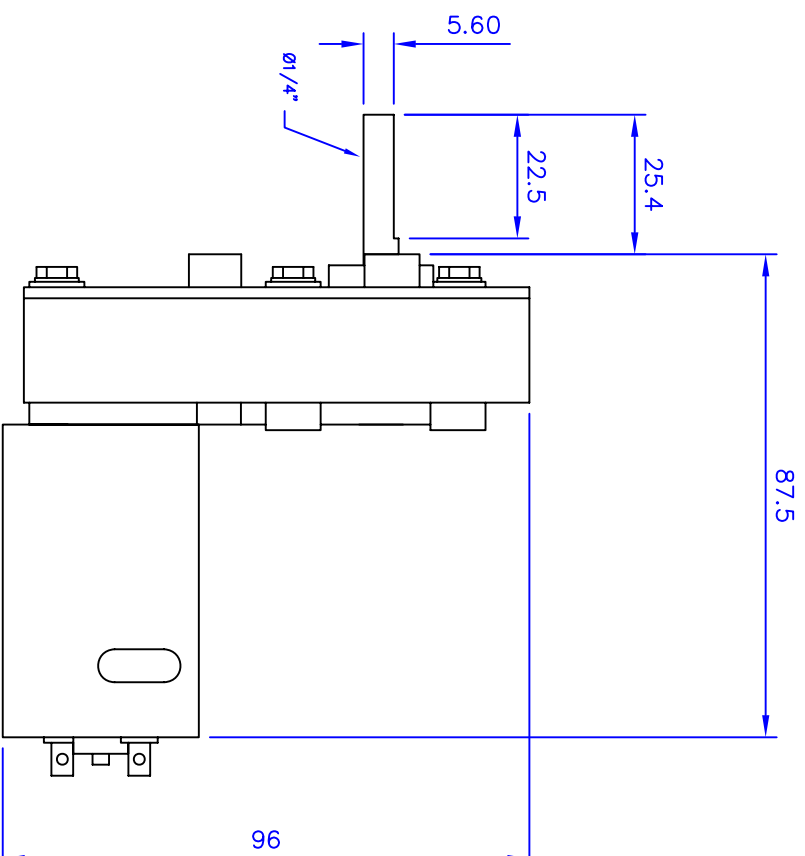


### TECHNICAL DATA

Motor Type – 555 Series  
 Voltage – 24v DC  
 Motor Resistance at 21°C. – 10.5 Ohms  
 Input Power at 24v DC – 3.8 Watts  
 Nominal Current at 24v DC – 0.15 Amps  
 Stall Current at 24v DC – 2.19 Amps  
 Output torque at 24v DC – 4.8Kg/cm  
 Thermal Protection – No Thermal Protection  
 Duty Cycle – Continuous  
 No Load Speed at 24v DC – 175.0rpm.  
 Output Shaft Rotation when viewed from front – CW/CCW.



Dimensions in mm

MELLOR ELECTRICS Ltd  
 BLACKBURN ENGLAND

DESCRIPTION  
 T6 DC 175rpm 24v DC 555 Series  
 CUSTOMER  
 FRICAVAL89 SL (MEDT6-017)

DRAWN  
 LC  
 05/02/14  
 PART No  
 UBD1116