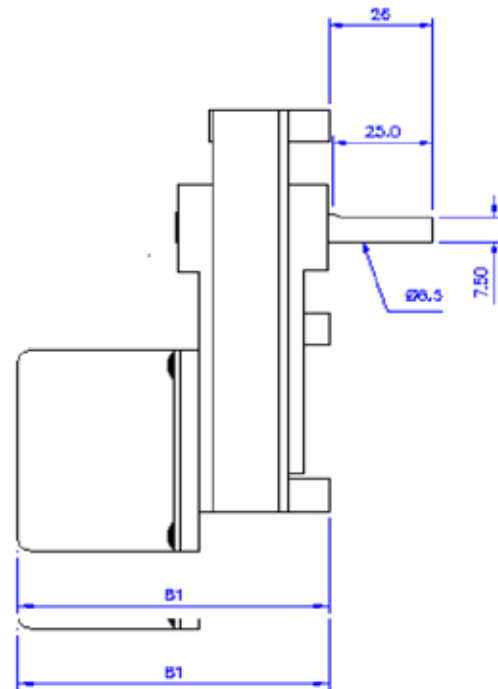
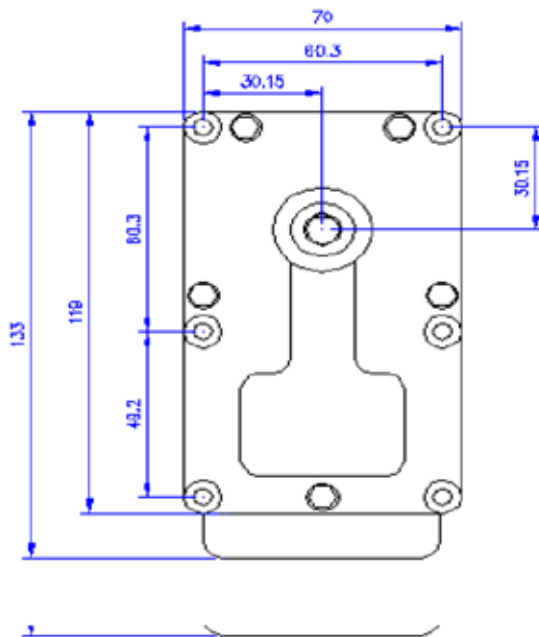


### FBSY – T3 Synchronous Series

- 230V 50Hz AC
- Bi-Directional
- Quiet running
- Max output torque 35Nm
- Standard speeds 1, 2 & 5rpm
- Class B insulation



FBSY SERIES  
 SYNCHRONOUS MOTOR.  
 DIRECTION OF ROTATION - CW/CCW  
 VOLTAGE- 230v 50Hz  
 INPUT POWER - 11W  
 NOMINAL CURRENT - 0.052Amps  
 STALL CURRENT - 0.057Amps

SPEED	1rpm	2rpm	5rpm
TORQUE	35Nm	19Nm	8Nm