



PolyGard®2

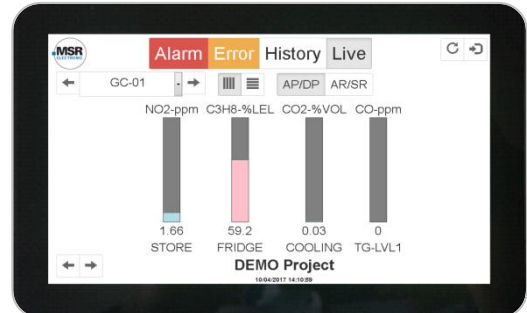
## Control Box PGCB for visualization

### PGCB-GC06-XX-X

For visualizing the measured data and recognizing hazards at a glance.

The PolyGard®2 Control Box is used in combination with the gas controller GC-06 or DGC-06 (with option ModBus) of a gas warning system.

Sensors, measured values and parameters, such as alarm relays thresholds can be visualized on the display. Statistics can be queried and exported as well. Thanks to the integrated network interface, the Control Box can be integrated into an existing network and thus all measured values can be recalled via remote access.



### FEATURES

- Plug & Play Software
- Automatic readout of the configuration and display of the AR / SR as well as of the measured values
- Multiple user levels possible
- Display of the current values, statistics, faults, alarms and others
- Capacitive multi-touch screen
- High quality display
- Glass front inserted in milled aluminum frame (with edge protection)
- Easy mounting
- Retrofitting possible
- Network interface for integration into the existing network
- Integrated web server
  - Access via web browser
  - Access by mobile devices (mobile phone, tablet computer, ..)
- Conformity to:
  - EN 61000-6-2
  - EN 61000-6-4
  - CE
  - EMC
  - RoHS



MSR-Electronic GmbH ::: Würdinger Str. 27 & 27A ::: 94060 Pocking ::: Germany

Specifications subject to change without notice  
Up-to-date data sheets and user manuals can be found in the download area of [www.msr-24.com](http://www.msr-24.com).  
PolyGard® is a registered trademark of MSR-Electronic GmbH



PolyGard®2

# Control Box PGCB for visualization

## SPECIFICATIONS

### Electrical

Power supply	24 V DC, 415 mA, 10 VA
--------------	------------------------

### Interfaces

Bus	1 x RS-485 to 9-pin D-SUB connector
-----	-------------------------------------

### Embedded PC

CPU	ARM Cortex-A9, i.MX6 Quad Core CPU; 4 x 1.2 GHz
-----	---

Memory card	2GB DDR3 (SDRAM shared with GPU)
-------------	----------------------------------

Supported memory card	SD card (max. 64 GB), 8 GB eMMC-Flash
-----------------------	---------------------------------------

Network	10/100/1000 Ethernet, RJ45
---------	----------------------------

USB ports	2 x USB 2.0
-----------	-------------

<b>Dimensions</b>	<b>PGCB-GC06-07-0</b>	<b>PGCB-GC06-15-0</b>
-------------------	-----------------------	-----------------------

Display	7", 1024 x 600 mm	15.6", 1388 x 768 mm
---------	-------------------	----------------------

Outside dimensions	192 x 132 x 32 mm (7.56 x 5.20 x 1.26 in.)	437 x 286 x 32 mm (17.20 x 11.26 x 1.26 in.)
--------------------	--	--

Panel cut-out	185 x 125 mm (7.28 x 4.92 in.)	422.5 x 271.5 mm (16.63 x 10.69 in.)
---------------	--------------------------------	--------------------------------------

Mounting depth	32 mm (1.26 in.)	32 mm (1.26 in.)
----------------	------------------	------------------

Weight	825 g (1.82 lb.)	4500 g (9.92 lb.)
--------	------------------	-------------------

### Ambient conditions

Working temperature	-10 °C to +50 °C (14 °F to 122 °F)
---------------------	------------------------------------

Storage temperature	-20 °C to +65 °C (-4 °F to 149 °F)
---------------------	------------------------------------

### Physical characteristics

Housing	Aluminum front PTFE, ABS plastic cover on the back
---------	--

Colour	Silver / black
--------	----------------

Protection class	IP66
------------------	------

<b>Directives</b>	EMC directives 2014/30/EU
-------------------	---------------------------

CE

Conformity to:

EN 61000-6-2

EN 61000-6-4

RoHS

<b>Warranty</b>	12 months
-----------------	-----------

## ORDER INFORMATION

PGCB-GC06-XX-X

### HOUSING

0 Without on-wall housing, without power unit

A With on-wall housing, with power unit

### SCREEN SIZE

07 7" Touchscreen

15 15" Touchscreen

## EXAMPLE

Standard PolyGard®2 Control Box with 7" touchscreen, with housing, with power unit

**Ordering number: PGCB-GC06-07-A**

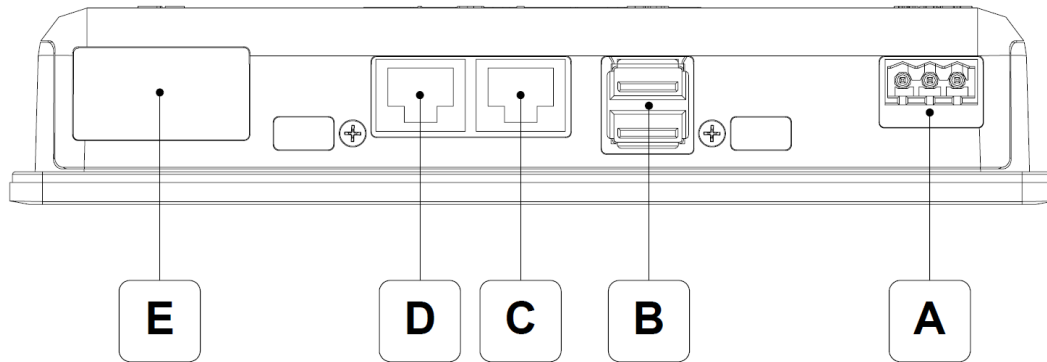




PolyGard®2

# Control Box PGCB for visualization

## WIRING CONFIGURATION



A	Power Supply	
B	2 x USB-A	
C	ETH2: IP-192.168.110.2	10/100/1000 Mbit – RJ45
D	ETH1: IP-DHCP	0/100 Mbit – RJ45
E	RS485 Serial Interface for communication to the ModBus output on the GC-06-Module	
	PIN-1:X-BUS-A	
	PIN-5:GND	
	PIN-6:X-BUS-B	

